

150

BROADWAY





Existing tenant built-out

150



In the neighborhood



Zuccotti Park



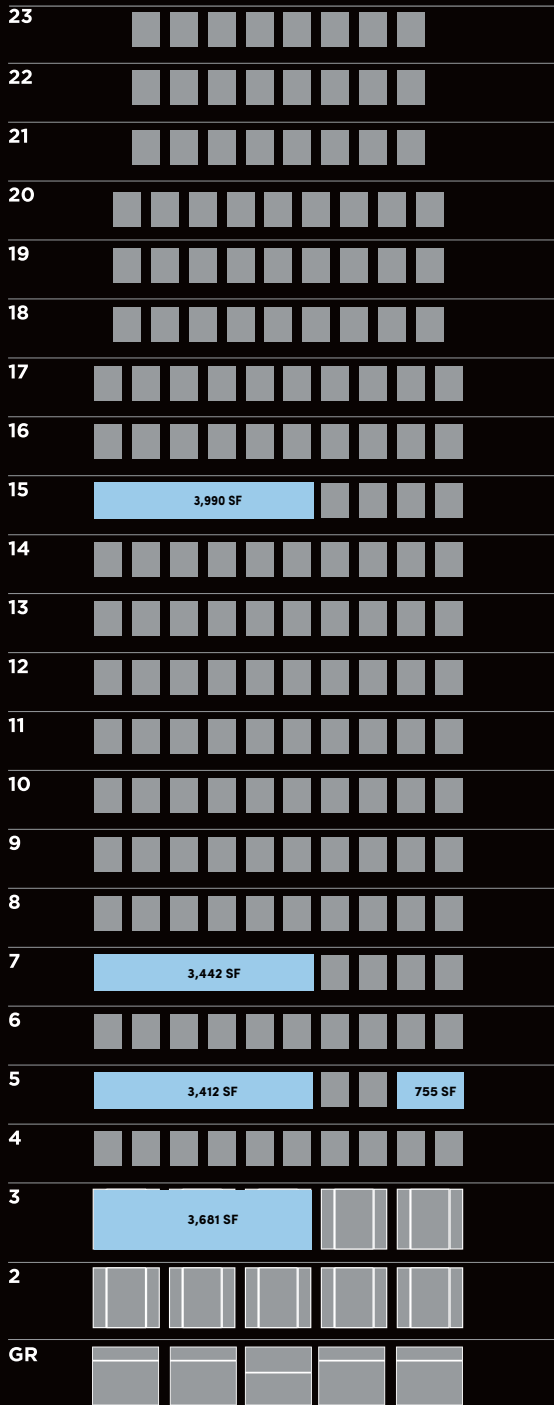
Fulton Center Transportation Hub



World Trade Center Transportation Hub



Zuccotti Park



STACKING PLAN



Existing tenant built-out

SPACE FEATURES

- High-end pre-built office space
- 12' high exposed ceilings
- Exposed steel columns
- Polished concrete floors
- Modern open kitchens
- Upscale finishes
- Flexible floor plates that are easily divisible
- High ratio of windows / SF

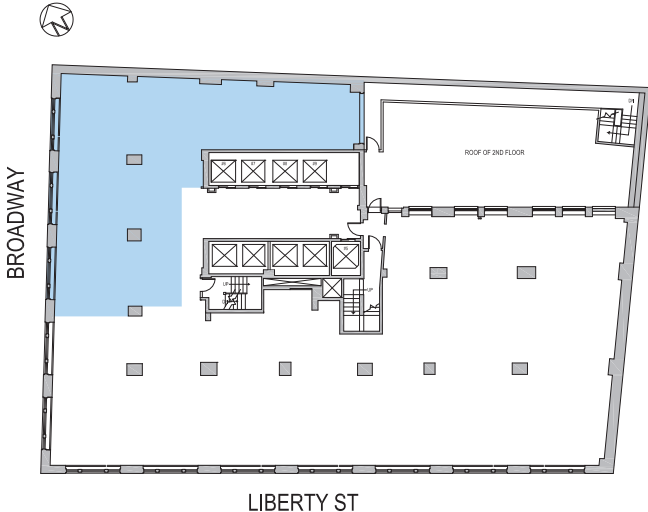


150

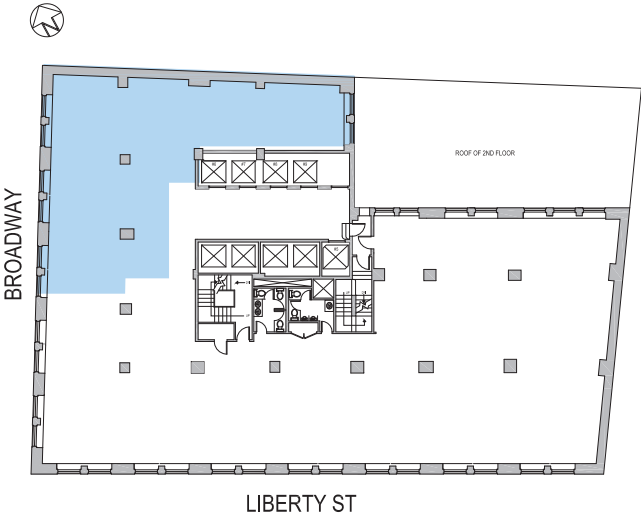
SPACE AVAILABILITIES

150

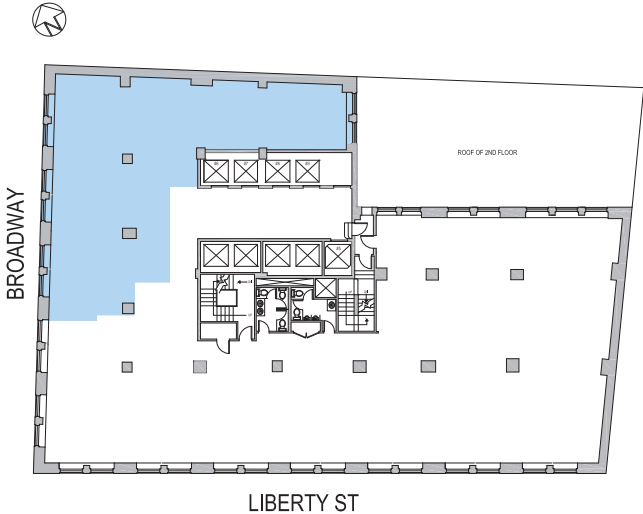
FLOOR 3 - 3,681 SF



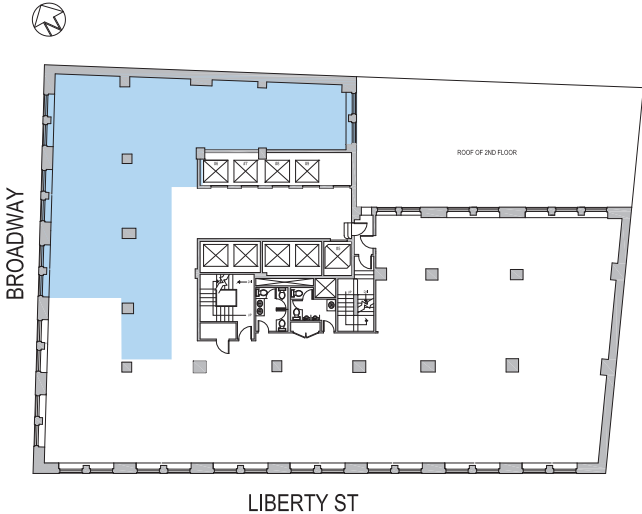
FLOOR 5 - 3,412 SF



FLOOR 7 - 3,422 SF



FLOOR 15 - 3,990 SF



150

3RD FLOOR

RENTABLE SQUARE FOOTAGE 3,681 SF

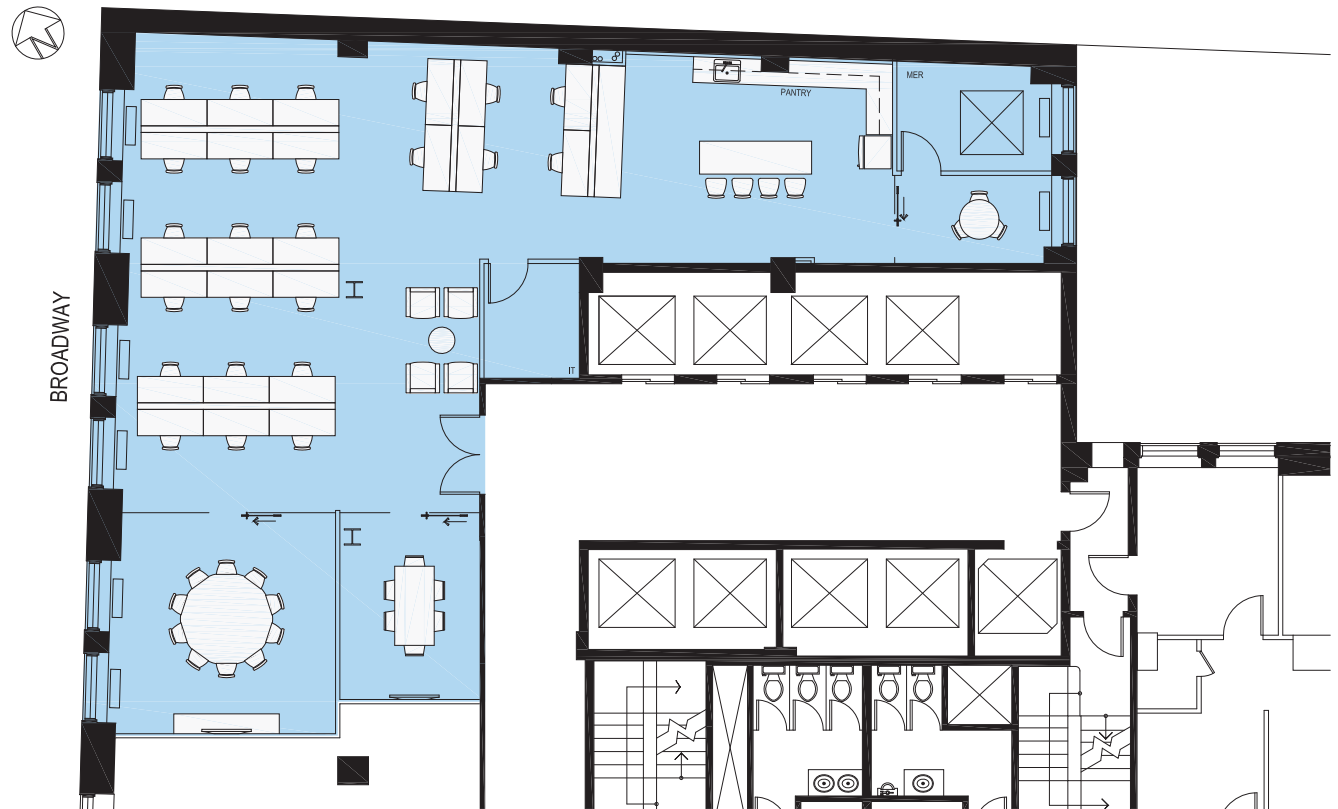


TEST FIT. ALL CONDITIONS ARE APPROXIMATE.

150

5TH FLOOR

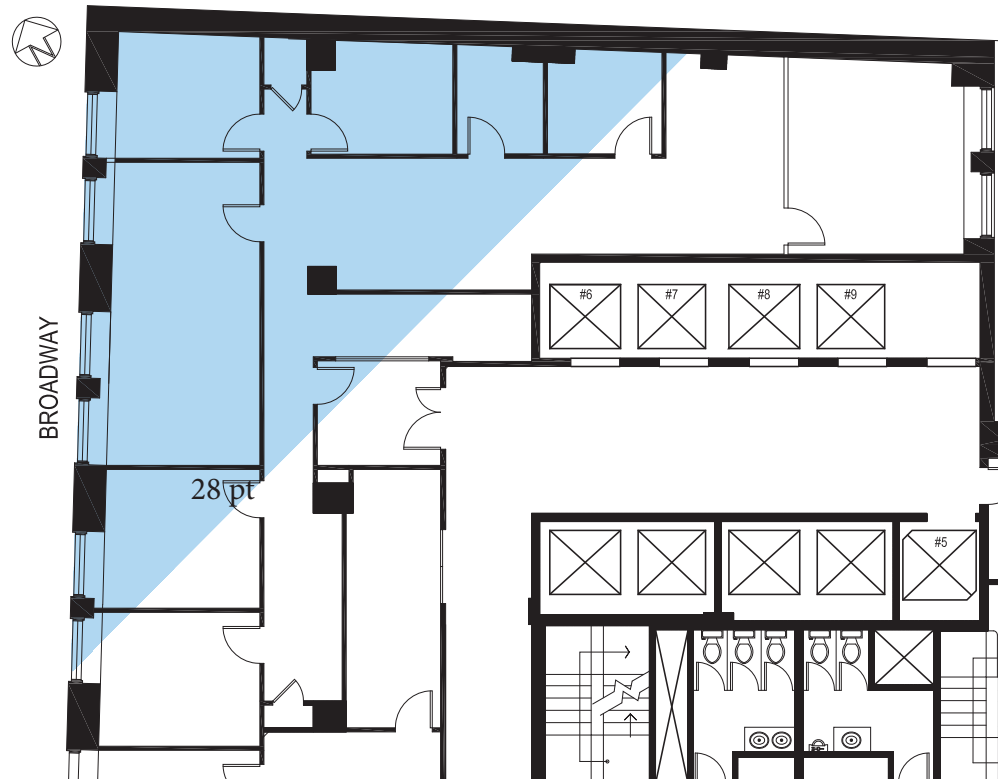
RENTABLE SQUARE FOOTAGE 3,412 SF



TEST FIT. ALL CONDITIONS ARE APPROXIMATE.

7TH FLOOR

RENTABLE SQUARE FOOTAGE 3,422 SF



150

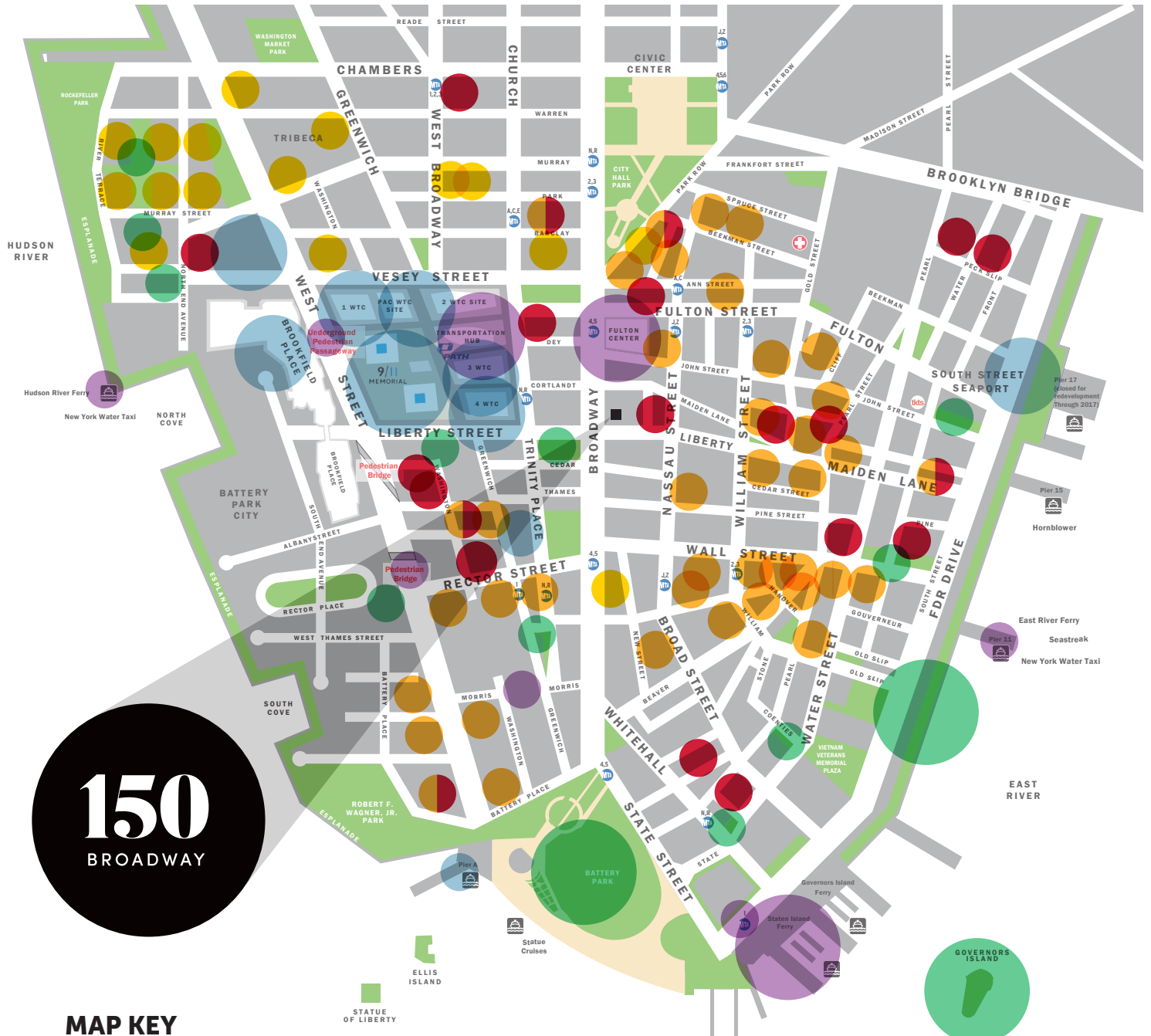
15TH FLOOR

RENTABLE SQUARE FOOTAGE 3,990 SF



TEST FIT. ALL CONDITIONS ARE APPROXIMATE.

- ONE WALL STREET**
Completion in 2020
- FOUR SEASONS HOTEL & RESIDENCES**
Completed in 2016
- THE BEEKMAN HOTEL & RESIDENCES**
Completed in 2016
- FULTON CENTER & CORBIN BUILDING**
Completed in 2014
- WORLD TRADE CENTER**
 - 1 World Trade Center
Completed in 2014
 - 2 World Trade Center
Completion TBD
- Westfield WTC/Transportation Hub
Completed in 2016
- 3 World Trade Center
Completed in 2018
- 4 World Trade Center
Completed in 2013
- National 9/11 Memorial Museum
Completed in 2014
- BROOKFIELD PLACE**
Completed in 2015/2016
- AKA WALL STREET**
Completed in 2016
- SEAPORT DISTRICT**
Completion in 2018/2019
- MR. C SEAPORT HOTEL**
Completed in 2018
- EAST RIVER WATERFRONT ESPLANADE**
Completed in 2013
- PIER A**
Completed in 2014
- THE BATTERY**
Completed in 2014/2015
- 20 BROAD STREET**
Completed in 2018
- THE PERELMAN CENTER FOR PERFORMING ARTS AT THE WORLD TRADE CENTER**
Completion in 2021
- GOVERNORS ISLAND**
Completed in 2014-2016



150
BROADWAY

MAP KEY

- Major Development Milestones
- Transportation
- Open Spaces
- Hotels
- Residential
- Hotel & Residential

Source: Alliance of Downtown New York

150

BROADWAY

FOR MORE INFORMATION ABOUT OUR CURRENT AVAILABILITIES, CONTACT:

JEMB
REALTY



Scott Cahaly
212 418 2644
scott.cahaly@am.jll.com

Kyle Young
212 418 2628
kyle.young@am.jll.com

GENERAL INQUIRIES: JEMBREALTY.COM